

**ORIENT EXPRESS**  
MAGAZINE

**CHARLESTON'S TOP SHOPS**

**ESD Elizabeth Stuart Design:** The King Street outpost of this design firm brims with the latest super-chic pillows, coffee-table books, candelabras, must-have-knick-knacks, furniture and more. Owner Muffie Faith recently won HGTV's *Designers Challenge* show; a taste of her style might also send you over the World War II Memorial Bridge to her West Ashley store (314 King Street, tel: 843 577 6272; 422 Savannah Highway, tel: 843 225 6282).

**ELIZABETH STUART DESIGN, LLC**

**ESD**

ANTIQUES • INTERIORS • JEWELRY

**Southern Accents**  
BEAUTIFUL HOMES, GRACIOUS LIVING, A SENSE OF PLACE

TRAVEL | CITY NOTEBOOK

March/April 2009

Charleston | Pastel row houses, stylish boutiques, an abundance of art and antiques, and a profusion of spring blooms—Charleston's charms are many. Designer and shop owner Muffie Faith, chef Mike Lata, gallery owner Ann Long, and Kirby Robinson, executive director of Historic Charleston Foundation, divulge the town's top spots

Style! Lowcountry living from Charleston's greatest home

charleston

Cotta

A 19th-century home and dressed in chic

**House of FAITH**

**Charleston Home**  
Summer 2008

**TRAVEL + LEISURE**  
special hotels issue

30 great U.S. inns

17 fabulous Paris hideaways

island paradise: mauritius

world's best service

"Shop at ESD for furniture, handmade jewelry, vintage lighting fixtures, and regional cookbooks."

**Travel + Leisure**  
June 2002

**Southern Accents**  
BEAUTIFUL HOMES, GRACIOUS LIVING, A SENSE OF PLACE

summer CHIC

**LEAP OF FAITH**

Designer Muffie Faith takes a sleek waterfront home in Mount Pleasant, South Carolina, from haunted to haute

**Southern Accents**  
July/August 2008

**Good Housekeeping**

"I Do"

THE DREAM (and more)

Too Much Too Little

EASY WINTER 14 One-of-a-kind ideas for your fall

Think You're The 30-something?

WE TEST IT

- Slow Cooker
- Photo Books
- Cashmere Sweaters

**Room for Change**

Three of them share a design-loving home renovation challenge with designer Muffie Faith to help her revamp her living room

**Good Housekeeping**  
January 2009

**HGTV**  
HOME & GARDEN TELEVISION

Muffie Faith,  
winner of HGTV  
Designers Challenge

**HGTV**  
2005

**CHARLESTON HOME + DESIGN**  
vOLUME 1 • ISSUE 1  
SUMMER 2008

THE SHOWROOM ISSUE

Charleston Designer's Pick: The 5 Spots to Shop

Plus  
New York Times Best-Selling Author  
Dottie Frank Invites Us Into Her Home

**IDEA HOUSE**

**Charleston Home & Design**  
Summer 2008

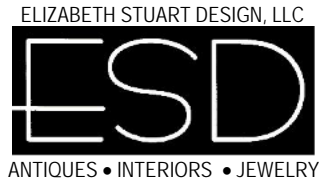
**Elizabeth Stuart Design**  
314 King Street, Charleston 29403  
(843) 577-6272  
Also: 422 Savannah Hwy., Charleston 29407  
[www.esdcharleston.com](http://www.esdcharleston.com)

ESD owner Muffie Faith is doing a great job of putting Charleston on the map as a chic, metropolitan shopping stop; her King Street showroom was named by Southern Living magazine as one of the top 50 shops in the South, and was the winner of HGTV's "Designers' Challenge" show (to air June 23 at 10am). Step inside and find everything from antiques and artwork to jewelry and place settings.

**Southern Living**

**Editor's Picks: 50 Top Shops in the South.** Elizabeth Stuart Design: Charleston, SC: With a mix of antique, mid-century, and new furniture, chandeliers, pottery, tableware, and pillows, this place is a one-stop spot for your home. [www.esdcharleston.com](http://www.esdcharleston.com).

**Southern Living**  
November 2006



Contact: Caroline Nelson  
(843) 225 6282  
buyer@esdcharleston.com

FOR IMMEDIATE RELEASE

### ESD Retail Services

ESD is not your typical home décor store—it's more of an experience. Shopping at ESD is an invitation to explore, to open the eyes and heart to beauty and inspiration. In fact, a love of travel and exploring is how ESD came to be. Through her travels across the world and her passion for foraging through European markets, owner Muffie Faith found unique treasures she wanted to share with others. Over the years she and her staff have honed an eye for discovering the elegantly eclectic furniture and accessories that set ESD apart. Muffie and her team are always out there looking, going far beyond the beaten path to bring back intriguing items with a patina of place and story.

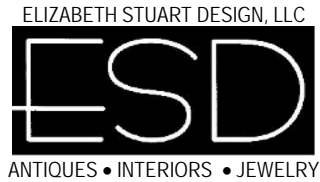
Both ESD locations, the downtown Charleston store and the 4000-square foot West Ashley showroom, are design emporiums where the exotic is expected and the unusual is the norm. You'll find beautiful furniture, both one-of-a-kind antiques and lush contemporary pieces, as well as magnificently crafted jewelry, vases, artwork, candles and books, among other surprises. Authenticity and personality infuse all ESD items, from vintage chandeliers to Deco mirrors to sumptuous throw pillows. The richly textured mix is always changing, making each shopping experience as unique as the merchandise.

ESD's originality has been heralded by the press, including magazines such as *Travel & Leisure* and *Southern Accents*. It was named "One of Top 50 Shops in the South" by *Southern Living* and has been featured in *Charleston Home* magazine.

Store hours are Monday through Saturday, 10 AM to 6 PM

422 SAVANNAH HIGHWAY • CHARLESTON, SC 29407 • PHONE 843 225 6282 • FAX 843 225  
6289

[www.esdcharleston.com](http://www.esdcharleston.com)  
visit our blog: <http://blog.esdcharleston.com/>



Contact: Caroline  
Nelson  
(843) 225 6282  
buyer@esdcharleston.com

FOR IMMEDIATE RELEASE

### **ESD Interior Design Services, Now Expanding**

To complement to our distinct array of furniture and home décor accessories, ESD is expanding its comprehensive interior design services. Owner and lead designer Muffie Faith and her talented and experienced team provide consultation for space planning as well as furnishing and finish selection, to ensure your home or business has the polished, finished look that reflects your personality and lifestyle. We can assist with small projects, offering suggestions to give you the confidence boost you need, or design and furnish a complete home or office interior from start to finish.

ESD design clients appreciate a stylish sophistication and count on our meticulous attention to detail. With savvy use of color, texture and form, we meld drama and elegance with comfort and warmth, often with an element of whimsy in the mix. First and foremost, we listen to our clients, and our custom designs are tailored to work for you in your space, based on individual tastes, dreams, budget and lifestyle demands. Personalized style is paramount, and originality is ESD's trademark.

ESD's distinguished interiors have been featured in *Southern Accents* and *Charleston Home* magazines. A visit to our retail showrooms illustrates the eclectic elegance that our designs build on. We offer a diverse selection of upscale fabric and upholstery samples including Scalamandré, Donghia, Schumacher, and Vervain.

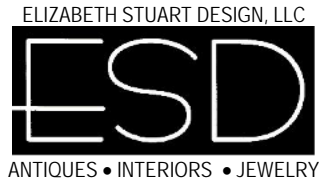
For interior design consultation, visit one of our stores or call 843 225 6282.

ESD store hours are Monday through Saturday, 10 AM to 6 PM

422 SAVANNAH HIGHWAY • CHARLESTON, SC 29407 • PHONE 843 225 6282 • FAX 843 225  
6289

[www.esdcharleston.com](http://www.esdcharleston.com)

visit our blog: <http://blog.esdcharleston.com/>



### About Muffie Faith:

Elizabeth Stuart Faith, "Muffie", is the energy and talent behind Elizabeth Stuart Design. She is a woman of passion as diverse as her style. She is a mother, wife, and friend. A tireless traveler, she has found her niche in discovering and exploring unlikely corners of the world. A self-professed "flea market junkie," her style spans from bohemian to the refined. Muffie's creative inspiration comes from the small, real moments of an on-the-go life. With an eye for design she pays close attention to detail while honing in on objects and fabrics rich in color and story. Her sophisticated eye and bold, smart aesthetic were nurtured from the beginning as a child growing up surrounded by her father's art collection and her mother's garden menagerie. A passion that has driven her since early childhood, Muffie has carried this in her work. "I was the one in my family constantly changing around my room. Large splays of pink dogwood became floral "sconces" on the wall. I always went for what was a little off the edge," says Muffie.

Over the years, Muffie has expressed her intuitive design sensibility through many mediums, from black and white photography to floral design, to commercial as well as residential design, and fashion retail with Alexander Julian. But her heart has always been in the home, giving living spaces an elegant vitality. For over a decade, Muffie's well-trained eye has selected a treasured array of home furnishings, fabrics, accessories, artwork, and jewelry to create her thriving retail and interior design boutiques: Elizabeth Stuart Design (ESD). Today, ESD represents a culmination of her creative momentum. From the big city of Houston, Texas to the corner of State and Chalmers on a cobblestone street in Historic Charleston, South Carolina, the boutique continues to prosper and grow. In addition to its flagship location at 314 King Street, ESD now includes the newest boutique on Savannah Highway just across the Ashley River from downtown Charleston. ESD is recognized as one of the Southeast's premier design emporiums, heralded by Southern Accents, Southern Living, HGTV, and Charleston HOME, among others. ESD is your invitation to approachable glamour, livable luxury, and style. Muffie's ability to find unique pieces and layer sumptuous textures with vibrant color is a gift that brings exuberance and authenticity to interiors. Her joy is sharing this gift with you.

422 SAVANNAH HIGHWAY • CHARLESTON, SC 29407 • PHONE 843 225 6282 • 843 225 6289

[www.esdcharleston.com](http://www.esdcharleston.com)

visit our blog: <http://blog.esdcharleston.com/>